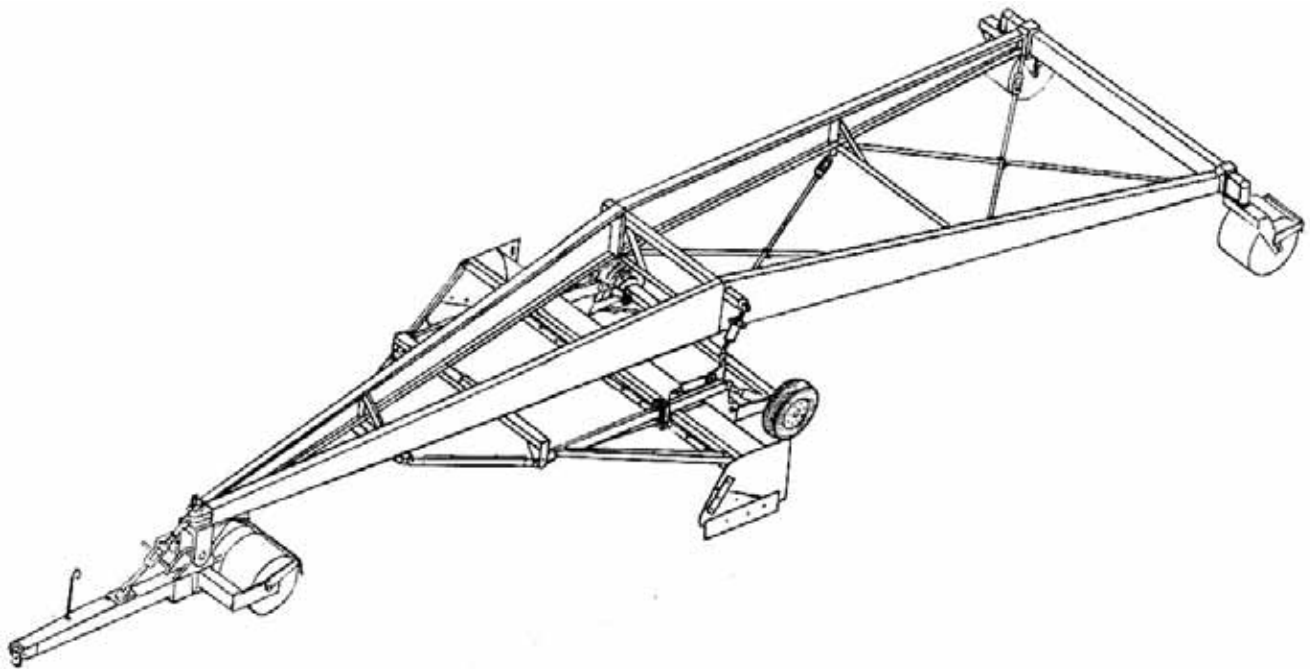


SCHMEISER LAND LEVELER

ASSEMBLY & PARTS MANUAL



T. G. SCHMEISER CO., INC.

P.O. BOX 1047 FRESNO, CA 93714-1047
(559) 268-8128 FAX (559) 268-3279
www.tgschmeiser.com

VERSION 1.5

Blank Page

INTRODUCTION

Your Schmeiser Land Leveler is designed to give you many years of dependable service. This manual has been prepared to instruct you in the safe and efficient operation of this machine. Read and study it thoroughly. Follow all instructions carefully.

Should your Land Leveler require replacement parts, go to your Schmeiser dealer. Always order genuine Schmeiser replacement parts.

It is important you complete and send in your Warranty Card because it is not valid unless it is on file at Schmeiser. If you need information not contained in this manual, contact your Schmeiser dealer.

Space has been provided below for you to record your model number and serial number of your leveler. Be sure to bring this information with you to your dealer when ordering parts or attachments for your leveler.

Thank you for buying a Schmeiser Land Leveler.

Serial Number _____

Model Number _____

Date Purchased _____

Dealer Name _____

Blank Page

TABLE OF CONTENTS

introduction.....A

Table of Contents.....B

Set Up Instructions.....1

Land Leveler Road Transport.....6

Land Leveling.....6

Hydraulic Cylinder Option.....7

Complete Assembly.....9

Bucket Assembly.....11

Bucket Bolt-Up Assembly.....13

Bucket Linkage Assembly.....15

Tongue Assembly.....17

Main Frame Pivot Shaft Assembly.....19

Turnbuckle Assembly.....21

Front Steel Wheel Assembly.....23

Rear Steel Wheel Assembly.....25

Tire Axle Assembly.....27

Tire Axle Hydraulic System Assembly.....29

Hydraulic Bucket Lift System Assembly.....31

Quad Tire Assembly.....33

Limited Warranty.....35

Blank Page

LAND LEVELER 40 SET UP INSTRUCTIONS

THE FOLLOWING TOOLS ARE NEEDED:

1. Truck with lifting boom, overhead hoist or forklift with 2000 pound lifting capacity.
2. A 24" adjustable wrench or large pipe wrench.
3. One 6" and two 12" adjustable wrenches.
4. Socket wrench with 15/16" and 1-1/2" sockets.
5. Heavy duty pliers.
6. A heavy duty 12" screwdriver.
7. A 14" tapered drift punch.
8. A pry bar.
9. A medium size ballpeen hammer.
10. A ten-pound sledge hammer.
11. Grease gun.

PROCEDURE:

1. Select a smooth level piece of ground approximately 60' x 100' to assemble the SCHMEISER landleveler. Place the bucket, with the bucket cross brace attached, in the center of the level piece of ground and facing the direction in which the machine is to be pulled. Place a wooden block (2" x 6" or 2" x 8" approximately 24" long) under each bucket side plate to prevent sinking and place at least one or preferably two column supports under the bucket cross member to hold it in position for bolting to the main frame.
2. Place the rear cross frame approximately 20 feet in back of the bucket and turn the wheels so they are parallel to the cross frame; then the unit will stand without additional support.
3. Place the right front and rear main frames on the right side of the bucket (standing behind the bucket looking forward) flat and on two pieces of wood (2" x 6" or 2" x 8" approximately 36" long) under each main frame, one near each end. Place the main frame with the front bearing clamp welded on toward the front and with the

butt or large end about even with the bucket roll. Place the right rear main frame butt to butt with the right front main frame. Slide together. Line up the mating holes and install (2) 1-1/4" NC x 4-1/2" Gr.8 bolts with lock washers and hex nuts and (1) 5/8" NC x 2" bolt with lock washer and hex nut in the hole near the bottom 1-1/4" NC bolt. Tighten all three.

4. Attach chain or sling to the bolted right main frames. Hoist the main frames up and position them over the bucket and bucket cross brace right end. Line up the mating holes of the bucket cross brace and the main frame mounting plate. Install four 5/8" NC x 4-1/2" bolts, lock washers and hex nuts; snug up with wrench but do not tighten. Place one assembly stand under the bucket cross brace as close to the attached main frame as possible and one assembly stand under the back end of the main frame just high enough that the rear cross frame can be attached.
5. Position the rear cross frame against the flat plate on the rear end of the main frame. Adjust the main frame height (if necessary) so that the two 8" U-bolts can be placed around the rear cross frame tube and inserted through the four mating holes in the end plate of the rear main frame. Insert four 7/8" NF hex nuts and lock washers. Snug up but do not tighten. It must be loose enough to move for sideways adjustment.
6. Hoist the center cross frame up with sling or chain attached to the 3" x 3" tube so that the cross frame is parallel to the ground and oriented to the square hole in the upper middle section of the right main frame. Make sure the cross frame is positioned so that the attaching bracket on the bottom side of the 3" x 3" square tube is flush on the side facing the forward end of the machine. Now slide the end of the square tube through the square hole in the frame until the two attaching holes match up. Install one 1" x 3-1/2" bolt with lock washer and hex nut and one 5/8" x 2" bolt with lock washer and hex nuts. Tighten securely. Place an assembly stand under the center cross frame base angle to support it in a level position.
7. Place the left front and rear main frames on the left side of the bucket and repeat the assembly procedure of Step 3 to assemble the left main frames.
8. Attach a chain or sling to the bolted left main frames. Hoist them up, line the square hole in the frame up with the 3" x 3" square tube of the center cross frame. Slide the frame onto the tube until the 1" NC x 3-1/2" bolt can be installed through the tube and the hole in the butt plate. Install the lock washer and hex nut. Snug up only, do not tighten.

9. Align the main frame over the bucket cross brace matching the holes. Install four 5/8" NC x 4-1/2" bolts, lock washers and hex nuts. Snug up. Do not tighten.
10. Install the other two 5/8" NC x 2" bolts in the center cross frame/main frame holes. Do not tighten.
11. Swing the rear cross frame into position against the left main frame rear attaching plate, adjust to install two 8" U-bolts and four 7/8" NF hex nuts and lock washers. Snug up. Do not tighten. Both 8" U-bolts must be loose enough to slide on the rear cross member for final adjustment.
12. Install the front steel wheel frame and main frame pivot shaft assembly (with bearing housing, thrust bearing, inner races, pin bearings, shaft cap, oil seal & dust cap) into the bearing clamp recess on the front end of the right and left main frames. Squeeze the bearing clamps together and line up the six mating holes. Install six 3/4" NC x 2" bolts, lock washers and hex nuts. Tighten up enough to hold head tube in place and place lock pin in position.
13. Hoist the tongue with wheel(s) attached into position at the front of the machine. Line up and position the extended rear section of the tongue with the main frame pivot shaft assembly mounted between the bearing clamps. Line up the mating holes and install the main pivot shaft clevis pin, castle nut and cotter pin.
14. Install turnbuckle assembly. Connect one end to the top hole in the bearing clamp and the other clevis end to the tongue turnbuckle anchor. Use two clevis pins 1" x 2-1/2" and two 1/4" x 1-3/4" lynch pins. Adjust tongue to be parallel with the ground by adjusting the turnbuckle.
15. Install rear inside frame. Use four 5/8" NC x 2" bolts, lock washers and hex nuts. Snug up only to allow slight movement.
16. Install front locking plate (with two slotted holes). Use two 3/4" NC x 3" bolts, flat washers, lock washers and hex nuts. Snug up only.
17. Install front cross frame between the front locking plate and main frame. Use three 3/4" NC x 2" bolts, lock washers and hex nuts and two 5/8" NC x 2" bolts with lock washers and hex nuts. Snug up only.
18. Install right and left pull braces (the left one has two pins welded to it to mount the front turnbuckle

when leveler is in field position) using four 3/4" NC x 2" bolts, lock washers and hex nuts. Attach between the front cross brace and the bucket cross brace. Snug up only.

19. Push the tire axle under the main frame. Align the tire axle so that when mounted to the rear of the bucket, the cylinder anchors are on the backside toward the rear cross frame. Now push the tire axle up until the legs slide into the gussets on the rear of the bucket. Line up the holes and insert a 1" NC x 3-1/2" bolt with zerks, through each hole. Put a locknut on each bolt and tighten.
20. Install two short cross rods (crossed) between the center cross frame and the rear inside frame. Use two 5/8" NC x 2" bolts, lock washers and hex nuts at center cross frame and two 5/8" NC x 2" bolts, lock washers and hex nuts at the rear inside frame end. Leave the rod assemblies loose.
21. Now install the two long cross rods (crossed) between the rear inside frame and the rear cross frame. Use two 5/8" NC x 2" bolts, lock washers and hex nuts at the rear cross frame end and two 5/8" NC x 2" bolts, lock washers and hex nuts at the rear inside frame end. Leave the rod assemblies loose.
22. Adjust the right and left main frame spacing on the rear cross frame. It should be centered by measuring from head tube to edge of main frame plate and sighting along the outside edge of both main frames to make sure they are not bowed in or out. Then tighten all eight 7/8" NF nuts onto the 8" U-bolts securely.
23. Tighten up all eight cross rod attaching bolts.
24. Tighten up all four cross rod turnbuckles sufficiently to square up the frames. Then install the cross rod U-bolts.
25. Tighten all bolts in front cross frame, bucket cross brace and rear inside frame.
26. Install T-bar lift arms on bucket top rear section with cylinder attaching extension pointing toward the front of the machine and the short end (distance from end hole to cylinder attaching hole) mounted on the bucket. Use one 1" NC x 6" bolt with nylon lock nut.
27. Install lift link turnbuckle assembly onto the end of the center cross frame. Align the turnbuckle so that the locking handle is located at the top; now slide the tube over the stub. Install end plate and 1/2" NC x 1-1/2" bolt with lock washer. To attach the bottom end

of the lift link assembly, line up the lift link clevis end with the T-bar link end hole. Adjust the turnbuckle by turning, clockwise or counterclockwise until the mating holes line up and the 1" NC x 3-1/2" bolt can be installed; then install 1" nylon lock nut. Make sure the grease fitting is facing out for ease of lubricating.

28. To install the other lift link, follow the same procedure as indicated in Step 27.
29. Install two 3-1/2" x 8" cylinders onto the tire axle. Use 1" x 4" cylinder pins. Position the shaft end clevis straddle of the cylinder attaching lug. Insert the cylinder pin and secure with hitch pin clips. Position the other clevis end straddle of the bucket attaching lug. Insert the cylinder pin and secure with hitch pin clips.
30. Install hydraulic piping and fittings from the front of the machine to the tire axle and install the 33" hoses into the upper port of the cylinders and the lower set of cross pipes. Use teflon tape for thread sealant on all pipe and hose joints. Support the piping with five double pipe clamps; one on the angle welded on the top front of the main frame, one on the front cross brace, one on each pipe hanger located on center cross frame base angle pointing toward the ground. Use five 5/16" NC x 2-1/2" bolts, lock washers and hex nuts.
31. Install one straight link lock between the T-bar and cylinder adjusting screw, which is mounted on the bucket hanger tube (one on each side of the machine) using two 1" NC x 3" bolts, lock washer and hex nuts mounted to the adjusting screw and two 1" NC x 3" bolts with nylon lock nuts mounted to the T-bar link.
32. Make a final check of the assembled landleveler. Cross rods should be tightened. The jam nut should be locked up against the turnbuckle. The front turnbuckle must be adjusted correctly. Lock pins should be in place. Make sure all frame and cross member bolts are tight. 8"-U-bolts must be tight and positioned correctly on the rear cross frame.
33. Optional bucket hydraulics with the transport hydraulics. Install pipes and fittings from the front of the machine to the center cross frame base angle; also the cross pipes. Use five double pipe clamps; one on the front main frame opposite the transport pipe hanger with 5/16" x 2-1/2" bolts, lock washers and hex nuts two piggyback on top of the transport pipe clamps with 5/16" x 5" bolts, lock washers and hex nuts, and two on each pipe hanger located on the center cross frame opposite the transport cross lines with 5/16" x

2-1/2" bolts, lock washers and hex nuts.

TO TRANSPORT THE LANDEVELER ON THE ROAD:

1. Move the bucket to its lowest position, then install the cylinder locking bars. The tire axle will be up and lock pins in place. Remove both lock pins from the tire axle. Lower the tire axle hydraulically until the lock pins can be reinserted into the same holes. This will lock the wheels into the transport position with the rear steel wheels off the ground.
2. Align the tongue with the frame center line, then insert the pivot shaft lockout pin, with the wrench portion up, between the frames and through the rear hole of the front main frame pivot shaft.
3. Adjust the front turnbuckle to hookup to the tractor drawbar, then readjust for the wheel/ground clearance desired.
4. Do not try to move the landleveler on the road on its steel wheels. Always use the transport wheels when moving on roadways.

TO LOWER LANDEVELER FOR LAND LEVELING:

1. Lower the tire axle hydraulically enough to remove the locking pins. Raise the tire axle slowly until the front or rear wheels touch the ground. Adjust the front turnbuckle until the pins are free. Remove the turnbuckle and mount it on the left pull brace with two lynch pins.
2. If the machine does not have a hydraulically actuated bucket, lift arm locks must be used on each side.
3. Remove the pivot shaft lockout pin, the 1" shaft between the front ends of the frame, place it in the pin holder bracket at the front of the machine.
4. The bucket leveling and depth adjustments are made by adjusting the lift screws located on each side of the landleveler.
5. Check the rear wheels for travel alignment:
 - a. Loosen both stabilizer bearing cap screws to assure that the bearing or roller is free to move in the slot.

- b. Stretch a string from the outside of one wheel rim to the outside of the opposite wheel rim approximately 14" off of and parallel to the ground.
 - c. Adjust each wheel so that the string touches the full surface of each wheel rim with no bend in the string. (Visually check from outside of one wheel to the outside of the other)
 - d. Retighten the bearing or roller cap screws in the stabilizer.
 - e. Remove the string and now the landleveler is ready to use.
6. Operating the machine under adverse conditions, such as extremely rough ground, rocks or stumps, may cause the hitch end bolt to break. If this occurs, do not replace the factory installed bolt with a case hardened bolt. It is intended to be a safety shear pin.
 7. Hydraulic Cylinder option. Adjust cylinder adjusting screw, located on the piston end of the bucket cylinder, so that the pivot point (A) is located 1/8" forward of a direct line between the upper turnbuckle; attach point (B) and the lower attach point (C) on each side of the machine. (See Drawing on the following page)
 8. Adjust the bucket lift turnbuckle to "Level", set blade and working height of the bucket.
 9. Recheck adjustment No. 7 above, to make sure pivot point is within tolerance (0" to 1/8"). If necessary, readjust No. 7 and No. 8 above.

Blank Page

HYDRAULIC BUCKET CYLINDER OPTION

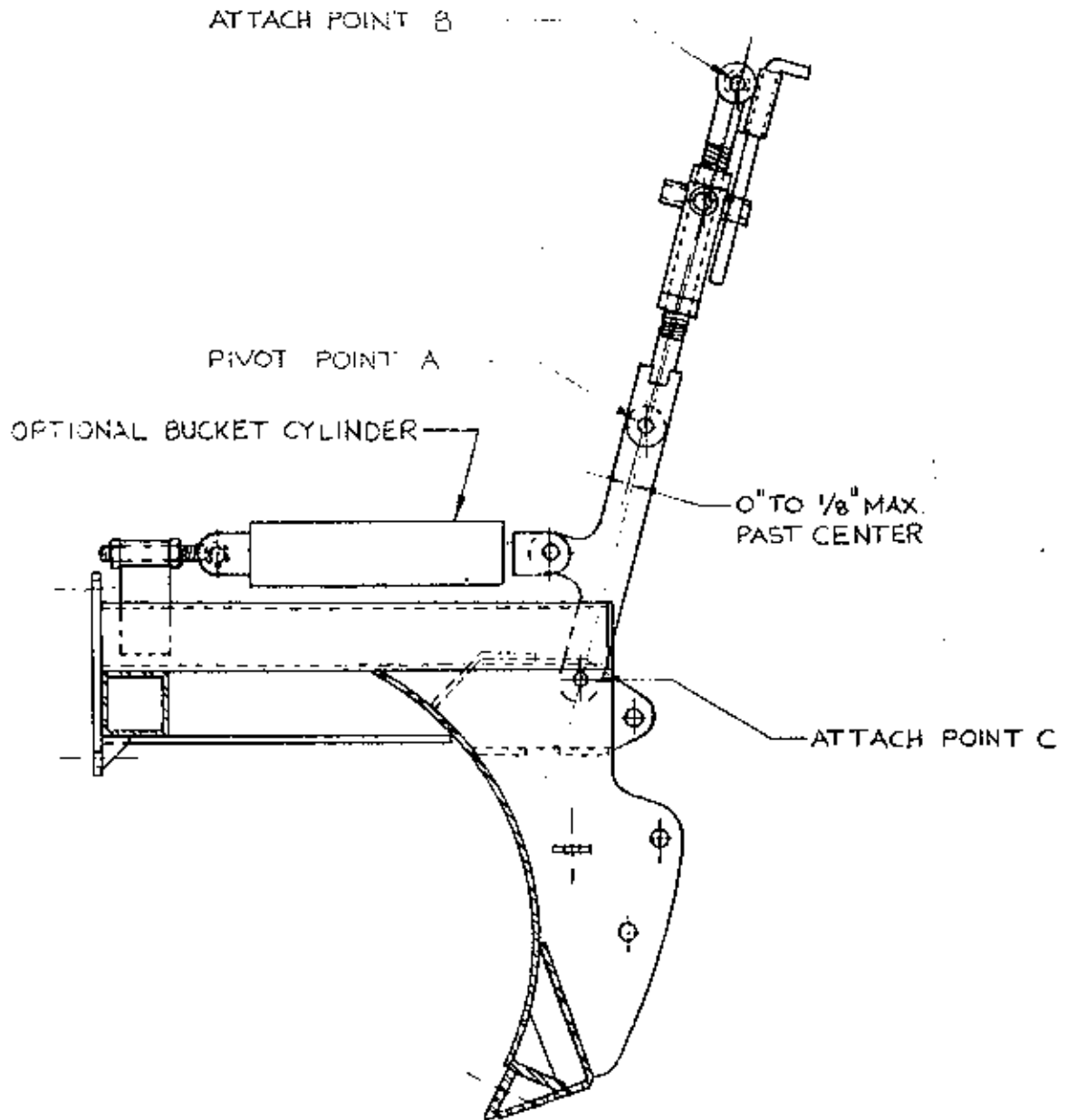
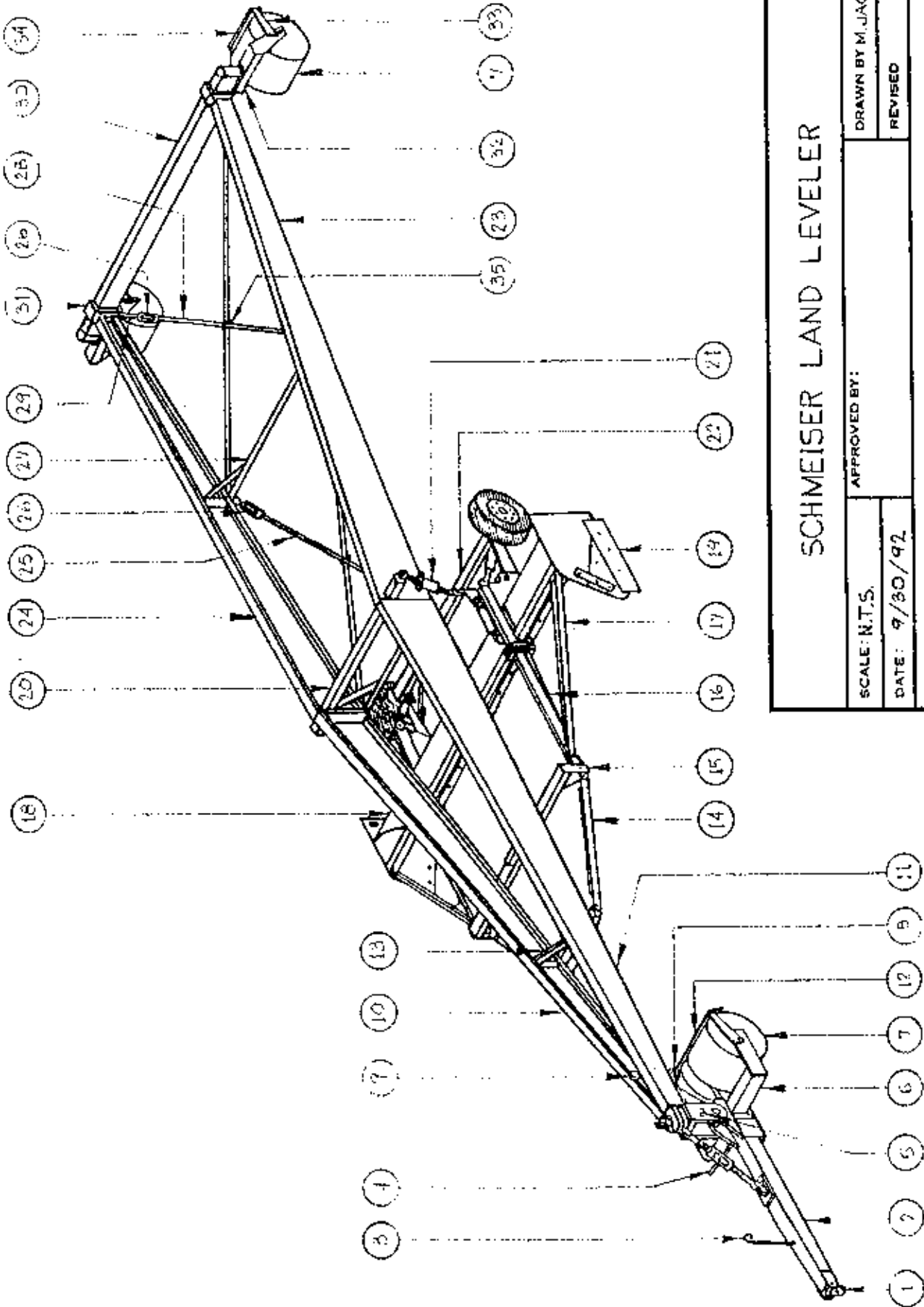


TABLE SLP-1

COMPLETE ASSEMBLY

Item #	Old Part #	New Part #	Description	Q-ty
1	SLP-Q2	SLP-00Q200	TONGUE HITCH	1
2	SLP-Q1	SLP-00Q100	TONGUE	1
3	SLP-Q5	GHC-HHOLD1	HYD. LINE SUPPORT	1
4	SLP-Q4	SLP-00Q300	FRONT TURNBUCKLE ASS'Y	1
5	SLP-N	SLP-00N000	MAIN FRAME PIVOT SHAFT	1
6	SLP-P1	SLP-00P100	FRONT STEEL WHEEL FRAME	1
	SLP-P2	SLP-00P400	QUAD TIRE FRAME (optional)	0
7	SLP-D	SLP-00D000	STEEL WHEELS	4
8	SLP-A8	SLP-00A800	PIVOT SHAFT LOCKOUT	1
9	SLP-A9	SLP-00A900	PIVOT SHAFT LOCKOUT PIN	1
10	SLP-A1R	SLP-00A100R	TOP FRAME, FRONT - R.H.	1
11	SLP-A1L	SLP-00A100L	TOP FRAME, FRONT - L.H.	1
12	SLP-P1-9	SLP-00P200	FRONT SCRAPER BLADE	1
13	SLP-G	SLP-00E100	FRONT CROSS FRAME	1
14	SLP-J2R	SLP-00J200R	PULL BRACE R.H.	1
	SLP-J2L	SLP-00J200L	PULL BRACE L.H.	1
15	SLP-J1	SLP-00J100	CROSS BRACE - T.F. TO BUCKET	1
16	SLP-K	SLP-00K000	BUCKET PULL ARM	2
17	SLP-K-7R	SLP-00K006	PULL ARM TIE BAR R.H.	1
	SLP-K-7L	SLP-00K007	PULL ARM TIE BAR L.H.	1
18	SLP-14-L1	SLP-14L100	BUCKET 14'	1
	SLP-16-L1	SLP-16L100	BUCKET 16'	1
	SLP-18-L1	SLP-18L100	BUCKET 18'	1
19	SLP-L2R	SLP-00L200R	BUCKET SIDES R.H.	1
	SLP-L2L	SLP-00L200L	BUCKET SIDES L.H.	1
20	SLP-F	SLP-00F000	CENTER CROSS FRAME	1
21	SLP-M	SLP-MTB	BUCKET TURNBUCKLE ASSEMBLY	2
22	SLP-H	SLP-00H000	TIRE AXLE	1
23	SLP-A2L	SLP-00A200L	TOP FRAME, REAR - L.H.	1
24	SLP-A2R	SLP-00A200R	TOP FRAME, REAR - R.H.	1
25	SLP-A4	SLP-00A400	FRONT ROD - 114"	2
26	SLP-AB0-1	GTB-12X96A	3/4" x 6" TURNBUCKLE ASSEMBLY	4
27	SLP-F	SLP-40G000	REAR INSIDE FRAME	1
28	SLP-A5	SLP-00A500	REAR ROD - 126"	2
29	SLP-A3	SLP-00A300	L.H. THRD. STUB END	4
30	SLP-14-C1	SLP-14C100	REAR CROSS FRAME 14'	1
		SLP-16C100	REAR CROSS FRAME 16'	
31	SLP-C2	JBNC14128S	REAR FRAME 8" SQUARE U-BOLT	2
32	SLP-B1	SLP-00B100	REAR STEEL WHEEL FRAME	2
33	SLP-B2R	SLP-00B200R	SCRAPER BLADE ARM R.H.	3
	SLP-B2L	SLP-00B200L	SCRAPER BLADE ARM L.H.	3
34	SLP-B2-3	SLP-00B203	SCRAPER BLADE - REAR	2
35	SLP-AB0-2	UBNC05X22P	5/16" X 1-3/8" U-BOLTS	2



SCHMEISER LAND LEVELER

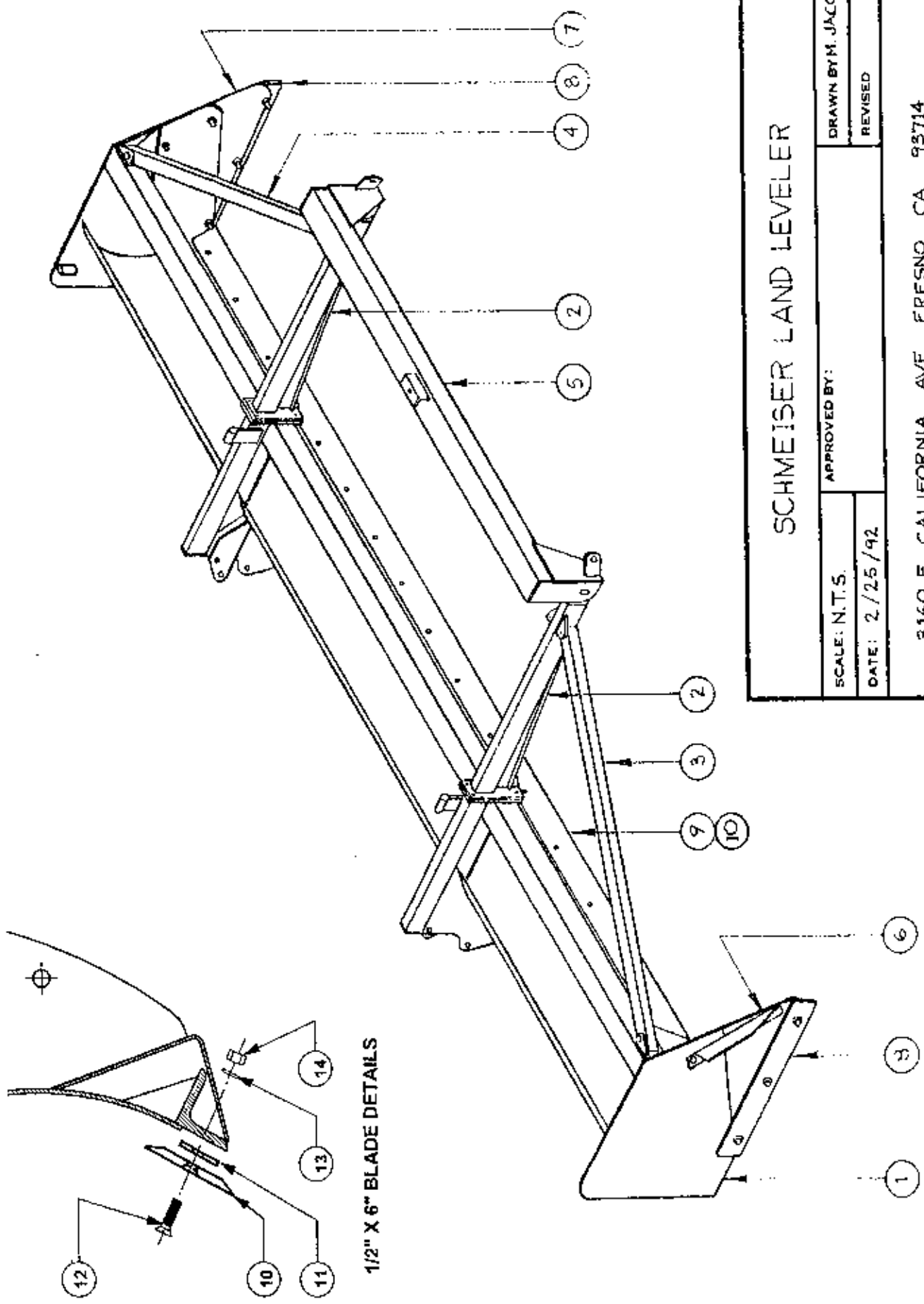
SCALE: N.T.S.		DRAWN BY M. JACOBY	
DATE: 9/30/92		REVISED	
3160 E. CALIFORNIA AVE. FRESNO CA 93714			
COMPLETE ASSEMBLY DRAWING		DRAWING NUMBER SLP-1	

NOTE: SEE TABLE SLP-1

TABLE SLP-2

BUCKET ASSEMBLY

Item #	Old Part #	New Part #	Description	Q-ty
1		SLP-12L100	BUCKET 12'	1
	SLP-14L	SLP-14L100	BUCKET 14'	1
		SLP-16L100	BUCKET 16'	
		SLP-18L100	BUCKET 18'	
2	SLP-K	SLP-00K000L	BUCKET PULL ARM LEFT	1
		SLP-00K000R	BUCKET PULL ARM RIGHT	1
3	SLP-K-7R	SLP-12K007R	BUCKET PULL ARM FOR 12' BUCKET RIGHT	1
		SLP-14K007R	BUCKET PULL ARM FOR 14' BUCKET RIGHT	1
		SLP-16K007R	BUCKET PULL ARM FOR 16' BUCKET RIGHT	1
		SLP-18K007R	BUCKET PULL ARM FOR 18' BUCKET RIGHT	1
4	SLP-K-7L	SLP-12K007L	BUCKET PULL ARM FOR 12' BUCKET LEFT	1
		SLP-14K007L	BUCKET PULL ARM FOR 14' BUCKET LEFT	1
		SLP-16K007L	BUCKET PULL ARM FOR 16' BUCKET LEFT	1
		SLP-18K007L	BUCKET PULL ARM FOR 18' BUCKET LEFT	1
5	SLP-J1	SLP-00J100	CROSS BRACE (TOP FRAME TO BUCKET)	1
6	SLP-L2R	SLP-00L200R	BUCKET SIDE RIGHT	1
7	SLP-L2L	SLP-00L200L	BUCKET SIDE LEFT	1
8	SLP-L2-4	SLP-00L204	BUCKET SIDE ADJUSTABLE BLADE	2
9	SLP-12-L1-23	SLP-12L123	3/8" X 4" SINGLE BEVELED BLADE 12'	1
	SLP-14-L1-23	SLP-14L123	3/8" X 4" SINGLE BEVELED BLADE 14'	1
	SLP-16-L1-23	SLP-16L123	3/8" X 4" SINGLE BEVELED BLADE 16'	1
	SLP-18-L1-23	SLP-18L123	3/8" X 4" SINGLE BEVELED BLADE 18'	1
10	SLP-12-L1-24	SLP-12L124	1/2" X 6" DOUBLE BEVELED BLADE 12'	1
	SLP-14-L1-24	SLP-14L124	1/2" X 6" DOUBLE BEVELED BLADE 14'	1
	SLP-16-L1-24	SLP-16L124	1/2" X 6" DOUBLE BEVELED BLADE 16'	1
	SLP-18-L1-24	SLP-18L124	1/2" X 6" DOUBLE BEVELED BLADE 18'	1
11	SLP-12-L1-25	SLP-12L125	1/2" X 6" BLADE SHIM 12'	1
	SLP-14-L1-25	SLP-14L125	1/2" X 6" BLADE SHIM 14'	1
	SLP-16-L1-25	SLP-16L125	1/2" X 6" BLADE SHIM 16'	1
	SLP-18-L1-25	SLP-18L125	1/2" X 6" BLADE SHIM 18'	1
12		PBNC-10028	5/8" X 1-3/4" PLOW BOLT	varies
13		LWASHER-10	5/8" LOCK WASHER	varies
14		HXNUT-10NC	5/8" HEX NUT	varies
3/8"x4" REPLACEMENT KIT		SLP-BK3812	3/8" X 4" BLADE KIT 12' (inc. items 9,12,13,14)	
		SLP-BK3814	3/8" X 4" BLADE KIT 14' (inc. items 9,12,13,14)	
		SLP-BK3816	3/8" X 4" BLADE KIT 16' (inc. items 9,12,13,14)	
		SLP-BK3818	3/8" X 4" BLADE KIT 18' (inc. items 9,12,13,14)	
1/2"x6" REPLACEMENT KIT		SLP-BK5012	1/2" X 6" BLADE KIT 12' (items 10,12,13,14)	
		SLP-BK5014	1/2" X 6" BLADE KIT 14' (items 10,12,13,14)	
		SLP-BK5016	1/2" X 6" BLADE KIT 16' (items 10,12,13,14)	
		SLP-BK5018	1/2" X 6" BLADE KIT 18' (items 10,12,13,14)	



1/2" X 6" BLADE DETAILS

SCHMEISER LAND LEVELER

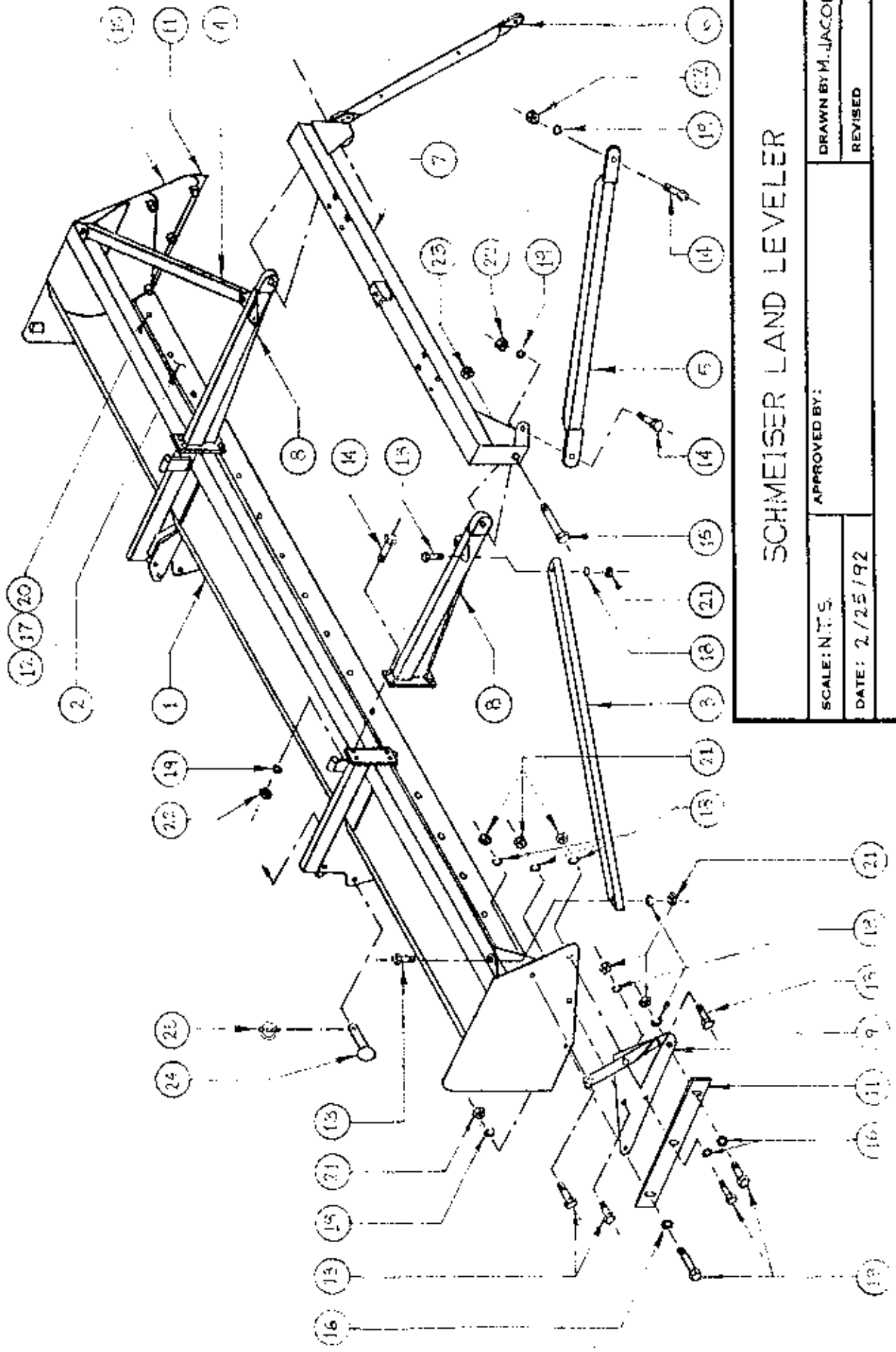
SCALE: N.T.S.	APPROVED BY:		DRAWN BY M. JACOBY
	DATE: 2/25/92		REVISED
3160 E. CALIFORNIA AVE., FRESNO CA 93714			
BUCKET ASSEMBLY DWG.		DRAWING NUMBER SLP-2	

NOTE: SEE TABLE SLP-2

TABLE SLP-3

BUCKET BOLT-UP ASSEMBLY

Item #	Old Part #	New Part #	Description	Q-ty Typ		Varied Q'ty & Lengths		
				All Units	Typ	14' Unit	16' Unit	18' Unit
1	SLP-1422	SLP-14100	BUCKET 14'	1		168"		
	SLP-1611	SLP-16100	BUCKET 16'	1		192"		
	SLP-1811	SLP-18100	BUCKET 18'	1				216"
2	SLP-14-L1-23	SLP-14L123	3/8" X 4" SINGLE BEVELED BLADE 14'	1		167-1/2"		
	SLP-16-L1-23	SLP-16L123	3/8" X 4" SINGLE BEVELED BLADE 16'	1		191-1/2"		215-1/2"
	SLP-18-L1-23	SLP-18L123	3/8" X 4" SINGLE BEVELED BLADE 18'	1				
	SLP-14-L1-24	SLP-14L124	1/2" X 6" DOUBLE BEVELED BLADE 14'	1		167-1/2"		
	SLP-16-L1-24	SLP-16L124	1/2" X 6" DOUBLE BEVELED BLADE 16'	1		191-1/2"		215-1/2"
	SLP-18-L1-24	SLP-18L124	1/2" X 6" DOUBLE BEVELED BLADE 18'	1		52-13/16"		
3	SLP-K-7R	SLP-14K007R	BUCKET PULL ARM FOR 14' RIGHT	1				
		SLP-16K007R	BUCKET PULL ARM FOR 16' RIGHT	1				
		SLP-18K007R	BUCKET PULL ARM FOR 18' RIGHT	1		61-13/16"		72-1/16"
4	SLP-K-7L	SLP-14K007L	BUCKET PULL ARM FOR 14' LEFT	1				
		SLP-16K007L	BUCKET PULL ARM FOR 16' LEFT	1		52-13/16"		
		SLP-18K007L	BUCKET PULL ARM FOR 18' LEFT	1		61-13/16"		72-1/16"
5	SLP-J2R	SLP-00J200R	PULL BRACE RIGHT	1				
6	SLP-J2L	SLP-00J200L	PULL BRACE LEFT	1				
7	SLP-J1	SLP-00J100	CROSS BRACE (TOP FRAME TO BUCKET)	1				
8	SLP-K-1	SLP-00K000L	BUCKET PULL ARM LEFT	1				
	SLP-K-R	SLP-00K000R	BUCKET PULL ARM RIGHT	1				
9	SLP-L2R	SLP-00L200R	BUCKET SIDE RIGHT	1				
10	SLP-L2L	SLP-00L200L	BUCKET SIDE LEFT	1				
11	SLP-L2-4	SLP-00L204	BUCKET SIDE ADJUSTABLE BLADE	2		(15)	(17)	(19)
12		PNBNC-10028	5/8" X 1 1/4" PLOW BOLT	16				
13		CSNC510032	5/8" X 2" GR.5 Z/P BOLTS	12				
14		CSNC512032	1/4" X 2" GR.5 Z/P BOLTS	2				
15		CSNC516072	1" X 4 1/2" GR.5 Z/P BOLTS	6				
16		FWASHER-10	5/8" FLAT WASHER	6		(15)	(17)	(19)
		FWASHER-10	5/8" FLAT WASHER	6				
17		LWASHER-10	5/8" LOCK WASHER	16		(15)	(17)	(19)
18		LWASHER-10	5/8" LOCK WASHER	12				
19		LWASHER-12	3/4" LOCK WASHER	12		(15)	(17)	(19)
20		RXNUT-10NC	5/8" HEX NUTS	16				
21		RXNUT-10NC	5/8" HEX NUTS	12				
22		RXNUT-12NC	3/4" HEX NUTS	2				
23		NYNUT-16NC	1" LOCK NUTS	2				
24		GPN-16X040	1" X 2 1/4" CLEVELS PIN	2				
25		GPN-04CLYN	1/4" X 1 1/4" LYNCH PIN	2				



SCHMEISER LAND LEVELER

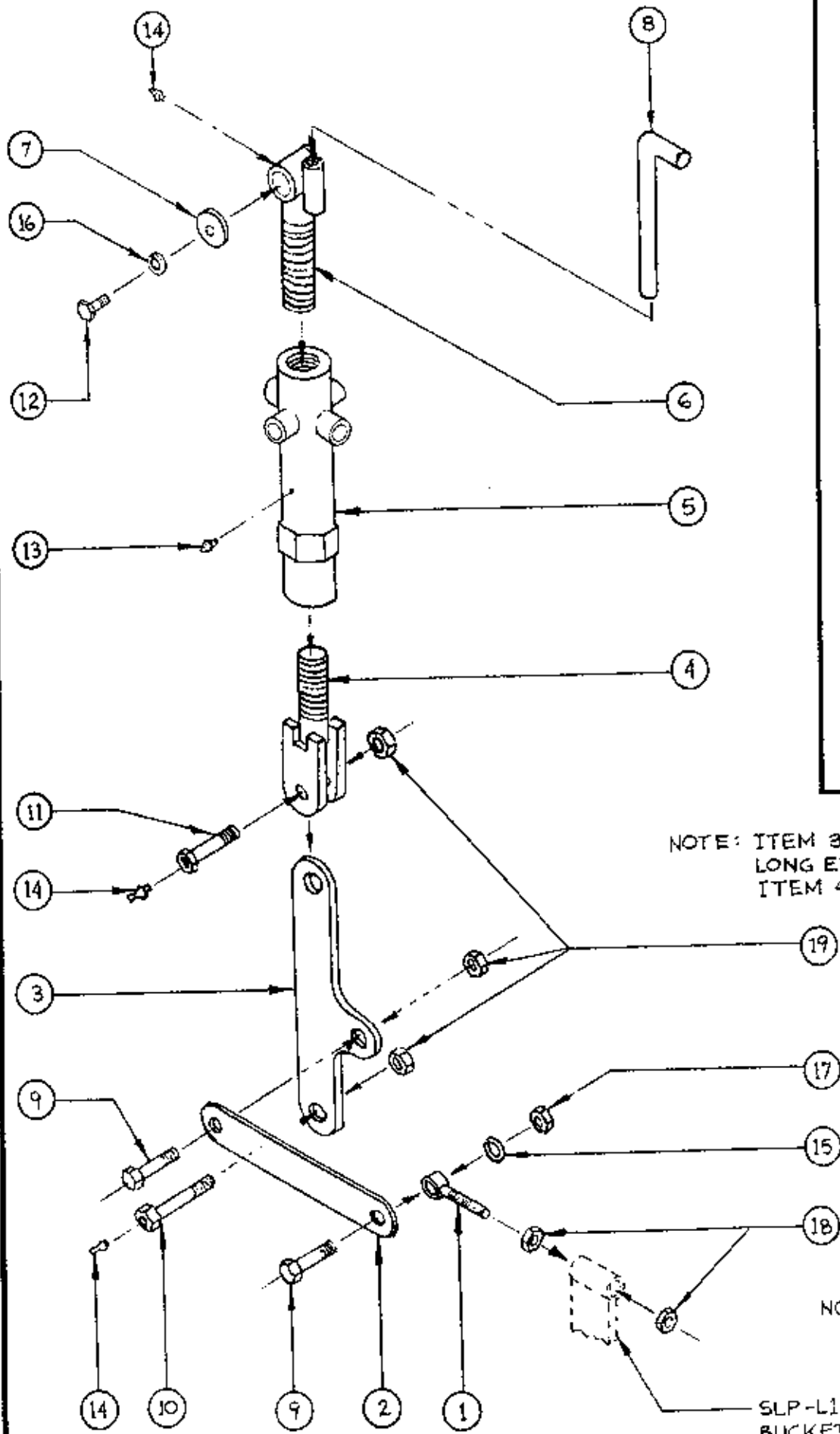
APPROVED BY:		DRAWN BY: M. JACOBY	
SCALE: N.T.S.	DATE: 2/25/92	REVISED	
3160 E. CALIFORNIA AVE., FRESNO CA 93714			
BUCKET BOLT-UP ASSEMBLY DWG.		DRAWING NUMBER SLP-3	

NOTE SEE TABLE SLP-3

TABLE SLP-4

BUCKET LINKAGE ASSEMBLY

Item #	Old Part #	New Part #	Description	Q-ty
1	SLP-M4	SLP-00M400	BUCKET LINKAGE ADJUSTMENT ROD	2
2	SLP-M-6	SLP-00M600	BUCKET LINKAGE STRAIGHT LINK	2
3	SLP-M-5	SLP-00M500	BUCKET LINKAGE T-BAR LINK	2
4	SLP-M2	SLP-00M200	BUCKET LINKAGE TURNBUCKLE BOTTOM	2
5	SLP-M3	GTB-00A002	TURNBUCKLE CASTING MACHINED	2
6	SLP-M1	SLP-00M100	BUCKET LINKAGE TURNBUCKLE TOP	2
7	SLP-M1-4	SLP-00M104	TURNBUCKLE END PLATE	2
8	SLP-M1-5	SLP-00M105	TURNBUCKLE CRANK ROD	2
9		CSNC516048	1" X 3" GR.5 Z/P BOLT	4
10		SLP-00M900	1" X 6" GR.5 Z/P BOLT W/ZERK HOLE	2
11		SLP-00M800	1" X 3-1/2" GR.5 Z/P BOLT W/ZERK HOLE	2
12		CSNC508024	1/2" X 1-1/2" GR.5 Z/P BOLT	2
13		GMB-ZERKTH	THREADED GREASE ZERKS	2
14		GMB-ZERKDT	PRESSED-IN (DRIVE TYPE) ZERK	6
15		LWASHER-16	1" LOCK WASHER	2
16		LWASHER-08	1/2" LOCK WASHER	2
17		HXNUT-16NC	1" Z/P HEX NUT	2
18		HXNUTJ16NC	1" JAM NUT	4
19		NYNUT-16NC	1" NYLON LOCK NUT	6
		SLP-MTB	BUCKET TURNBUCKLE ASSEMBLY KIT (includes items 4, 5, 6, 8, 13, 14)	



SCHMEISER LAND LEVELER

DRAWN BY M. JACOBY	
REVISED	
APPROVED BY:	
SCALE: N.T.S.	
DATE: 2/26/92	
3160 E CALIFORNIA AVE, FRESNO CA 93714	
BUCKET LINKAGE ASSEMBLY DWG.	
DRAWING NUMBER SLP - 4	

NOTE: ITEM 3 INSTALLED WITH LONG END ATTACHED TO ITEM 4

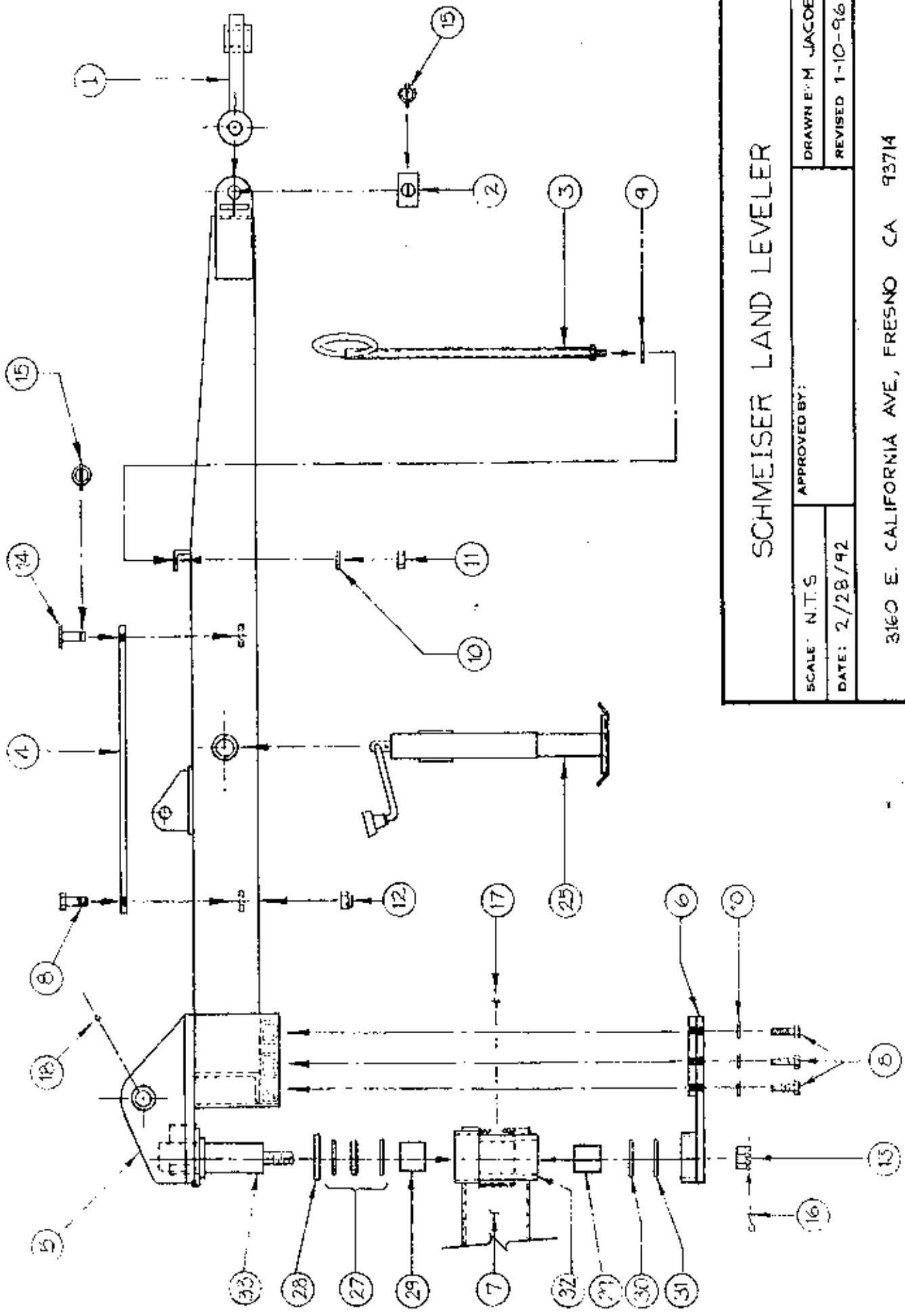
NOTE: SEE TABLE SLP-4

SLP-L1
BUCKET REF.

TABLE SLP-5

TONGUE ASSEMBLY

Item #	Old Part #	New Part #	Description	Q-ty
1	SLP-Q2	SLP-00Q200	TONGUE HITCH	1
2	SLP-Q6	SLP-00Q700	TONGUE HITCH CLEVIS PIN	1
3	SLP-Q5	GHD-HHCLD1	HYD. LINE SUPPORT (HOSE HOLDER)	1
4	SLP-Q1-18	SLP-00Q118	TONGUE LOCKOUT BAR	1
5	SLP-Q1	SLP-00Q100	TONGUE	1
6	SLP-Q7	SLP-00Q800	FRONT WHEEL FRAME BEARING CLAMP	1
7	SLP-P1	SLP-00P100	FRONT STEEL WHEEL FRAME	1
8		CSNC512032	3/4" X 2" GR.5 Z/P BOLT	6
9		FWASHER-12	3/4" FLAT WASHER	1
10		LWASHER-12	3/4" LOCK WASHER	6
11		HXNUT-12NC	3/4" HEX NUT	1
12		NUNUT-12NC	3/4" NYLON LOCK NUT	1
13		CANUT-24NF	1-1/2" NF CASTLE NUT	1
14		GPN-12X040	3/4" X 2" CLEVIS PIN	1
15		GPN-040LYN	1/4" X 1-3/4" LYNCH PIN	2
16		GPN-04X40C	1/4" X 2-1/2" COTTER PIN	1
17		GMB-ZERKTH	THREADED GREASE ZERK	1
18		GMB-ZERKDT	PRESSED IN GREASE ZERK	1
19		SLP-00Q119	PULL FRAME BEARING SHAFT	1
25	SLP-Q80-3	GJK-5KTW10	10", 5000# JACK STAND	1
27	SLP-A6B0-3	GBR-48TB01	THRUST BEARING	1
28	SLP-A6B0-1	GBR-47394S	OIL SEAL	1
29	SLP-A6B0-4	GBR-4856GB	HOUSING BUSHING	2
30	SLP-P1-14	SLP-00P114	1/4" SHAFT CAP	1
31	SLP-A6-3	SLP-00A603	3/8" SHAFT CAP	1
32	SLP-P1-10	SLP-00P300M	BEARING HOUSING MACHINED	1
33		SLP-00Q119	PULL FRAME BEARING SHAFT	1



SCHMEISER LAND LEVELER

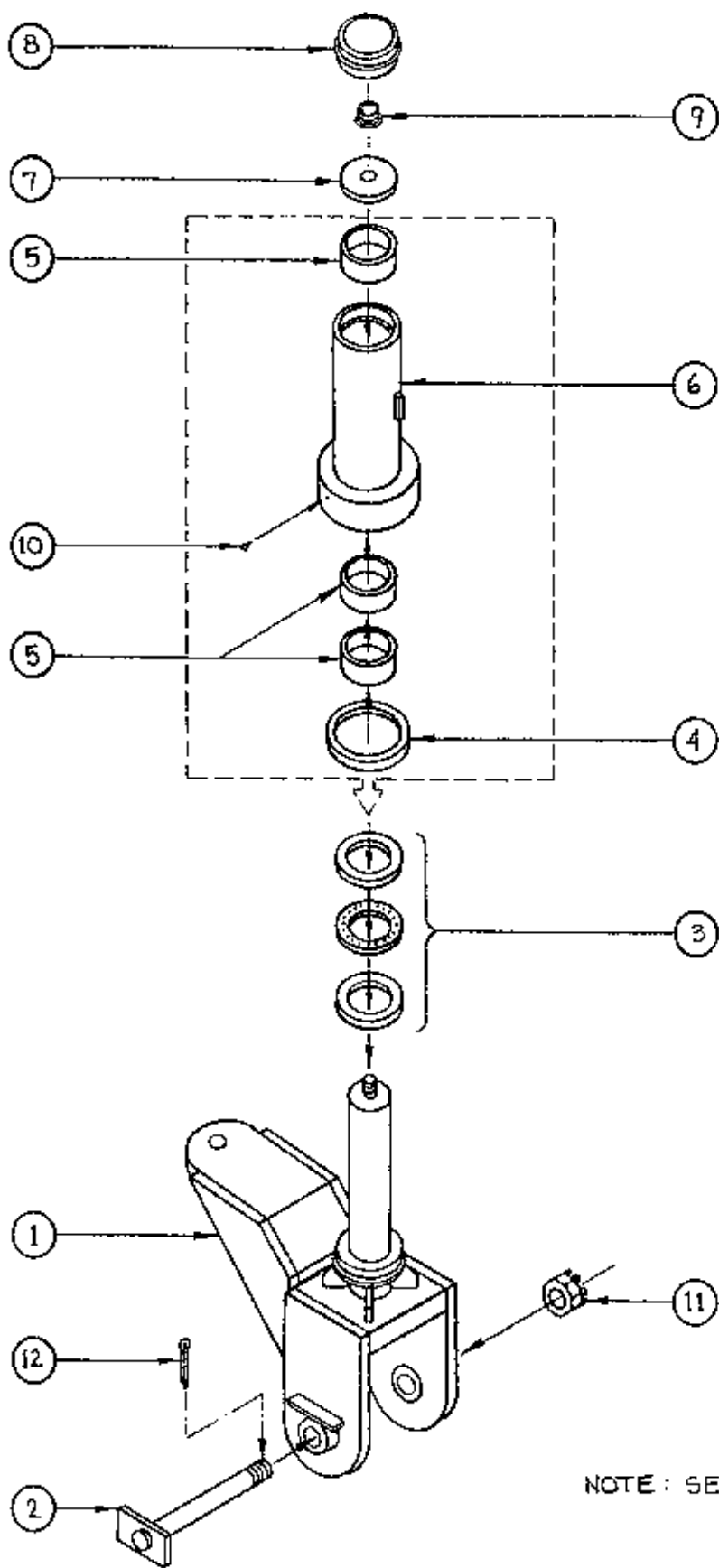
DRAWN E. M. JACOBY	
REVISED 1-10-96	
SCALE: N.T.S.	APPROVED BY:
DATE: 2/28/92	
3160 E. CALIFORNIA AVE., FRESNO CA 93714	
TONGUE ASSEMBLY DWG.	
DRAWING NUMBER SLP - 5	

NOT TO SCALE SLP-5

TABLE SLP-6

MAIN FRAME PIVOT SHAFT

Item #	Old Part #	New Part #	Description	Q-ty
1	SLP-N	SLP-00NCCC SLP-00N001	MAIN FRAME PIVOT SHAFT WELDMENT SHAFT ONLY	1
2	SLP-N-9	SLP-00N100	MAIN FRAME PIVOT SHAFT CLEVIS PIN	1
3	SLP-A6B0-3	GBR-48TB01	THRUST BEARING	1
4	SLP-A6B0-1	GBR-47394S	OIL SEAL	1
5	SLP-A6B0-4	GBR-4856GB	HOUSING BUSHING	3
6	SLP-A6F	SLP-00A600F	TOP FRAME FRONT BEARING HOUSING	1
7	SLP-A6-3	SLP-00A603	3/8" SHAFT CAP	1
8	SLP-A6B0-5	GBR-00GC01	HOUSING DUST (GREASE) CAP	1
9		NYNUT-14NC	7/8" NYLON LOCK NUT	1
10		GMB-ZERKTH	THREADED GREASE ZERK	1
11		CANUT-24NF	1-1/2" NF CASTLE NUT	1
12		GFN-04X40C	1/4" X 2-1/2" COTTER PIN	1
		SLP-00A6KFC	FRONT BEARING HOUSING KIT COMPLETE (Includes all above items)	



NOTE: SEE TABLE SLP-6

SCHMEISER LAND LEVELER

SCALE: N.T.S.	APPROVED BY:	DRAWN BY: M. JACOBY
DATE: 11/9/93		REVISED

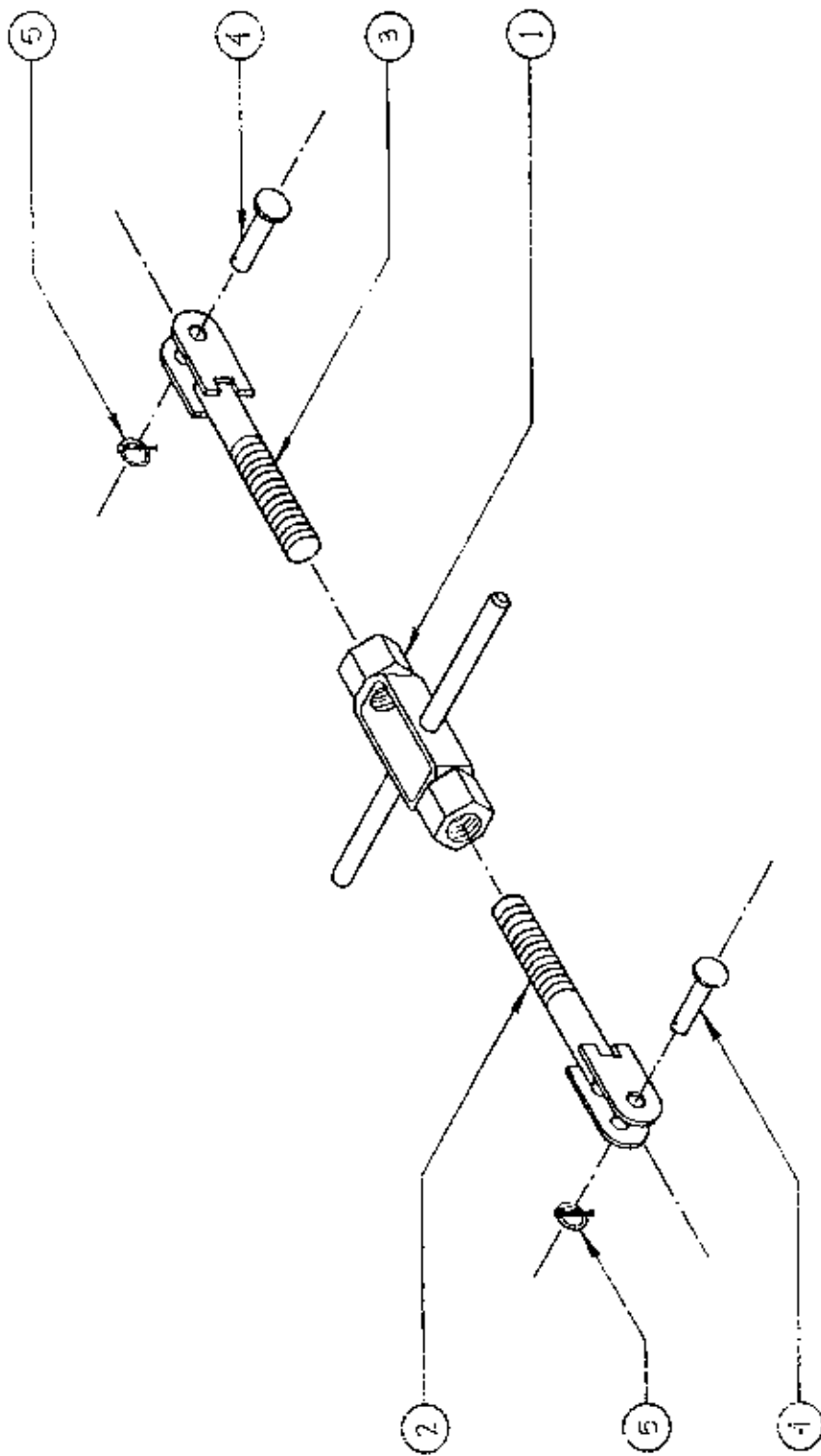
3160 E. CALIFORNIA AVE. FRESNO, CA 93714

MAIN FRAME PIVOT SHAFT	DRAWING NUMBER SLP-6
------------------------	-------------------------

TABLE SLP-7

FRONT TURNBUCKLE ASSEMBLY

Item #	Old Part #	New Part #	Description	Q-ty
1	SLP-Q4BO-1	} SLP-C0Q300	TRI-PLANE FRONT TURNBUCKLE ASS'Y (sold as assembly only)	1
2	SLP-Q4-1			
3	SLP-Q4-2			
4		GPN-16X040	1" X 2-1/2" CLEVIS PIN	2
5		GPN-040LYN	1/4" LYNCH PIN	2



NOTE: SEE TABLE SLP-7

SCHMEISER LAND LEVELER

SCALE: N.T.S.

DATE: 3/25/92

APPROVED BY:

DRAWN BY: M. JACOBY

REVISED

3160 E. CALIFORNIA AVE., FRESNO CA 93714

FRONT TURNBUCKLE ASSEMBLY

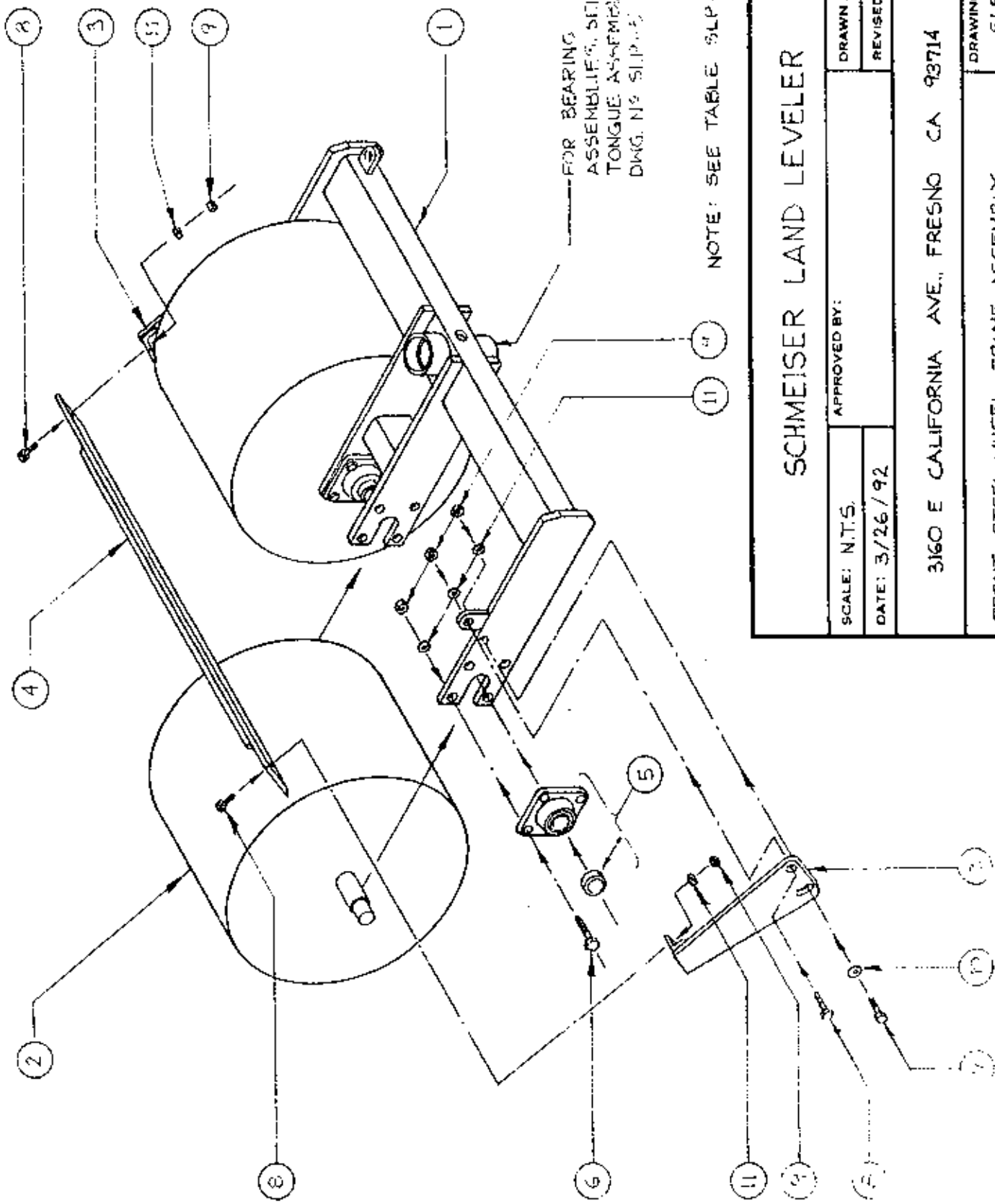
DRAWING NUMBER

SLP-7

TABLE SLP-8

FRONT STEEL WHEEL FRAME ASSEMBLY

Item #	Old Part #	New Part #	Description	Q-ty
1	SLP-P1	SLP-00P100	FRONT STEEL WHEEL FRAME	1
2	SLP-D	SLP-00D000	STEEL WHEELS	2
3	SLP-B2	SLP-00B200L	SCRAPER BLADE ARM LEFT	1
		SLP-00B200R	SCRAPER BLADE ARM RIGHT	1
4	SLP-P1-9	SLP-00P200	FRONT WHEEL SCRAPER BLADE	1
5	SLP-DBO-1	TPP3152	1-11/16" FLANGE BEARINGS	4
6		CSNC508036	1/2" X 2-1/4" GR.5 Z/P BOLTS	16
7		CSNC508032	1/2" X 2" GR.5 Z/P BOLTS	4
8		CSNC508024	1/2" X 1-1/2" GR.5 Z/P BOLTS	2
9		HXNUT-08NC	1/2" HEX NUT	22
10		FWASHER-08	1/2" FLAT WASHER	2
11		LWASHER-08	1/2" LOCK WASHER	22



SCHMEISER LAND LEVELER

SCALE: N.T.S.
 DATE: 3/26/92
 APPROVED BY:
 DRAWN BY: M. JACOBY
 REVISED

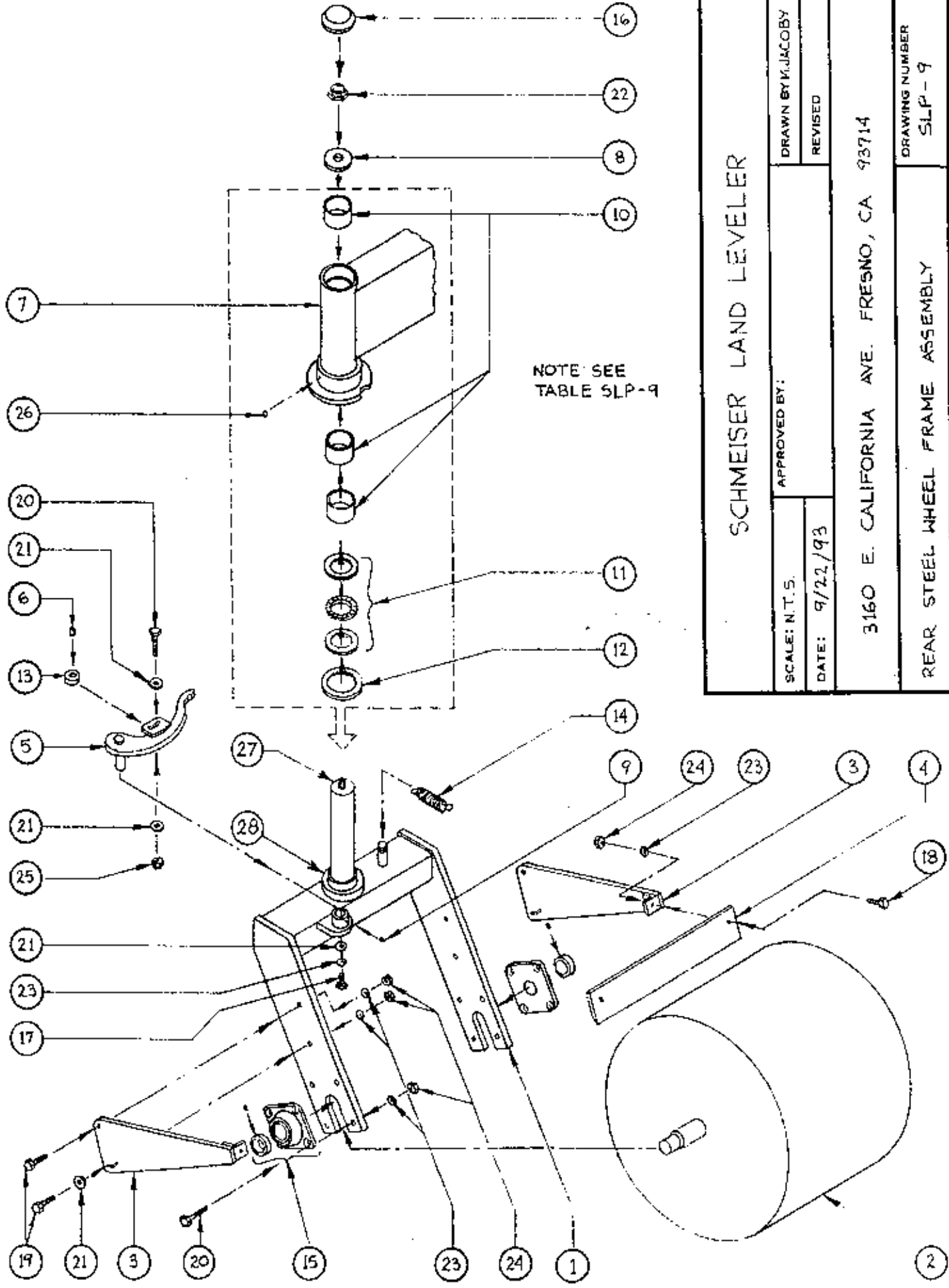
3160 E CALIFORNIA AVE., FRESNO CA 93714

FRONT STEEL WHEEL FRAME ASSEMBLY
 DRAWING NUMBER
 SLP-8

TABLE SLP-9

REAR STEEL WHEEL FRAME ASSEMBLY

Item #	Old Part #	New Part #	Description	Q-ty
1	SLP-B1	SLP-00B100	REAR STEEL WHEEL FRAME	2
2	SLP-D	SLP-00D000	STEEL WHEELS	2
3	SLP-B2	SLP-00B200L	SCRAPER BLADE ARM LEFT	2
		SLP-00B200R	SCRAPER BLADE ARM RIGHT	2
4	SLP-B2-3	SLP-00B203	SCRAPER BLADE	2
5	SLP-B3	SLP-00B300	LOCKING ARM	2
6	SLP-B3-4	SLP-00B304	LOCKING ARM BEARING BUSHING	2
7	SLP-A6R	SLP-00A600R	REAR FRAME BEARING HOUSING	2
8	SLP-A6-3	SLP-00A603	SHAFT CAP	2
9		GMB-2ERKDT	PRESSED IN GREASE ZERK	2
10	SLP-A6B0-4	GBR-4856GB	HOUSING BUSHING	6
11	SLP-A6B0-3	GBR-48TB01	THRUST BEARING	2
12	SLP-A6B0-1	GBR-47394S	OIL SEAL	2
13	SLP-B3B0-1	GBR-00CB01	LOCKING ARM BEARING (CENTERING BEARING)	2
14	SLP-B3B0-S	GSR-CENT01	LOCKING ARM SPRING (CENTERING SPRING)	2
15	SLP-DB0-1	TPP3152	1-11/16" FLANGE BEARING	4
16	SLP-A6B0-5	GBR-00GC01	HOUSING DUST CAP	2
17		CSNC508016	1/2" X 1" GR.5 Z/P BOLTS	2
18		CSNC508024	1/2" X 1-1/2" GR.5 Z/P BOLTS	4
19		CSNC508032	1/2" X 2" GR.5 Z/P BOLTS	8
20		CSNC508036	1/2" X 2-1/4" GR.5 Z/P BOLTS	16
21		FWASHER-08	1/2" FLAT WASHER	10
22		NYNUT-14NC	7/8" NYLON LOCK NUT	2
23		LWASHER-08	1/2" LOCK WASHER	30
24		HXNUT-08NC	1/2" HEX NUT	28
25		NYNUT-08MC	1/2" NYLON LOCK NUT	2
26		GMB-ZERKTH	THREADED GREASE ZERK	2
27		SLP-CON001	PIVOT SHAFT	2
28		SLP-00B100	REAR FRAME SHAFT COLLAR	2
		SLP-00A6KRP	REAR FRAME BEARING HOUSING KIT PARTIAL (Includes items: 7, 10, 11, 12, 26)	2
		SLP-00A6KRC	REAR FRAME BEARING HOUSING KIT COMPLETE (Includes items: 7, 8, 10, 11, 12, 16, 22, 26, 27, 28)	2



NOTE SEE TABLE SLP-9

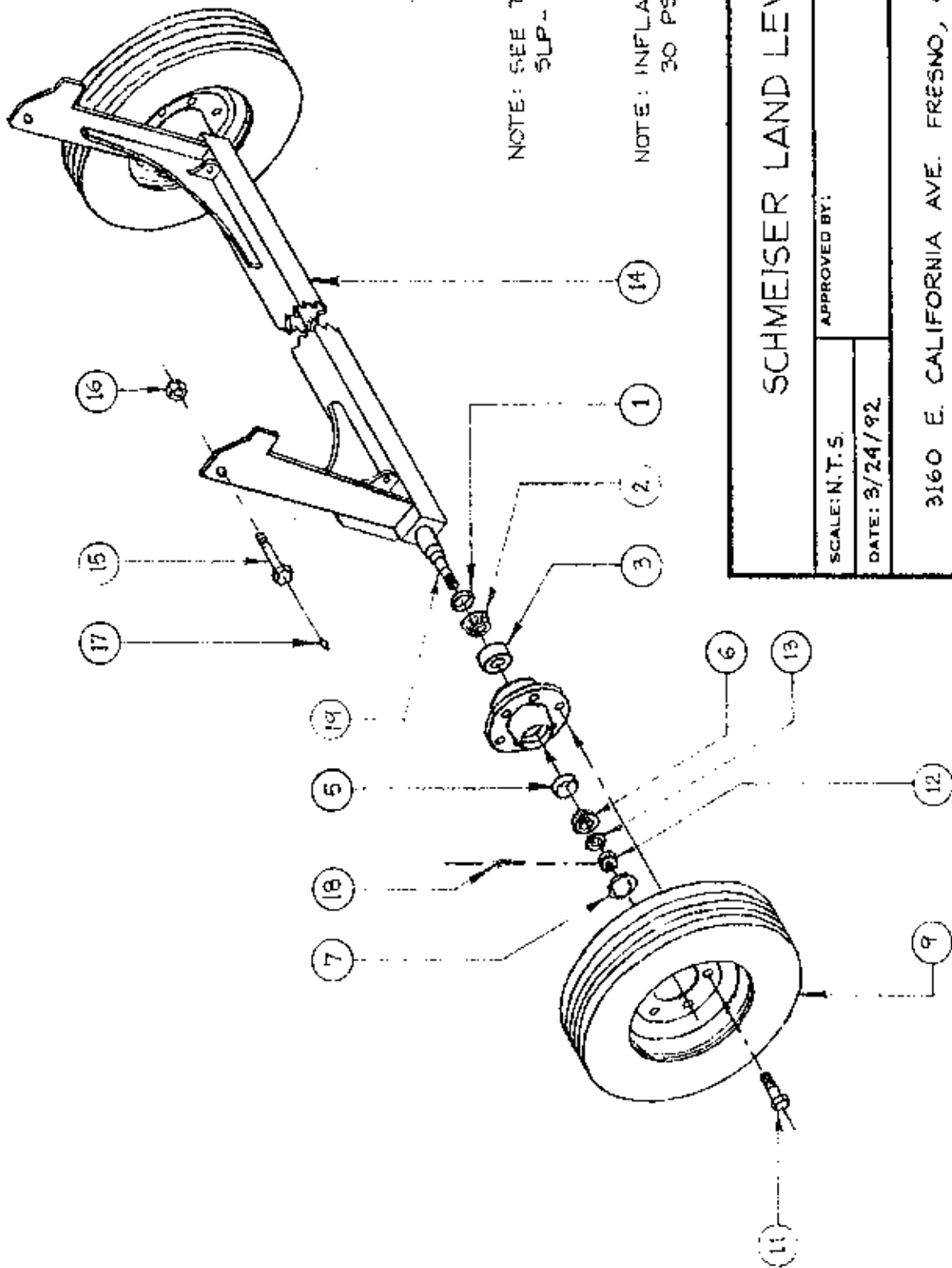
SCHMEISER LAND LEVELER

SCALE: N.T.S.	APPROVED BY:	DRAWN BY: K. JACOBY
DATE: 9/22/93		REVISED
3160 E. CALIFORNIA AVE. FRESNO, CA 93714		
REAR STEEL WHEEL FRAME ASSEMBLY		DRAWING NUMBER SLP-9

TABLE SLP-10

TIRE AXLE ASSEMBLY

Item #	Old Part #	New Part #	Description	Q-ty
1	SLP-HBO-1	GHB-8X8GSL	OIL SEAL FOR 8 ON 8 HEAVY HUB	2
2	SLP-HBO-2	GHB-8X8ICN	INNER BEARING CONE FOR 8 ON 8 HVY HUB	2
3	SLP-HBO-3	GHB-8X8IRC	INNER BEARING RACE FOR 8 ON 8 HVY HUB	2
4	SLP-HBO-4	GHB-8X8HVY	HUB, 8 ON 8 HEAVY COMPLETE (includes items 1, 2, 3, 5, 6, 7)	2
5	SLP-HBO-5	GHB-8X8ORC	OUTER BEARING RACE FOR 8 ON 8 HVY HUB	2
6	SLP-HBO-6	GHB-8X8OCN	OUTER BEARING CONE FOR 8 ON 8 HVY HUB	2
7	SLP-HBO-7	GHB-8X8CAP	DUST CAP FOR 8 ON 8 HEAVY HUB	2
9	SLP-HBO-9	GWT-121614	12.5 X 16 14 PLY TIRE W/WHEEL	2
11	SLP-HBO-11	WHB-09X018	WHEEL BOLTS FOR 8 ON 8 HEAVY HUB	16
12	SLP-HBO-12	GSP-14CANT	7/8" CASTLE NUT, SPINDLE	2
13	SLP-HBO-13	GSP-14SPWA	7/8" FLAT WASHER, SPINDLE	2
14	SLP-H	SLP-00H000	TIRE AXLE	1
15		CSNC508024	1" X 3-1/2" GR.5 Z/P BOLTS	2
16		NYNUT-16NC	1" NYLON LOCK NUT	2
17		GMB-ZERKDT	PRESSED-IN GREASE ZERK	2
18		GPN-04X28C	1/4" X 1-3/4" COTTER PIN	2
19		GSP-34248S	2-1/8" X 15-1/2" SINGLE ENDED SPINDLE	2
		SLP-00HKIT	SLP SPINDLE ASSEMBLY KIT (includes items 12, 13, 18, 19)	



NOTE: SEE TABLE
SLP - 10

NOTE: INFLATE TIRES TO
30 PSI

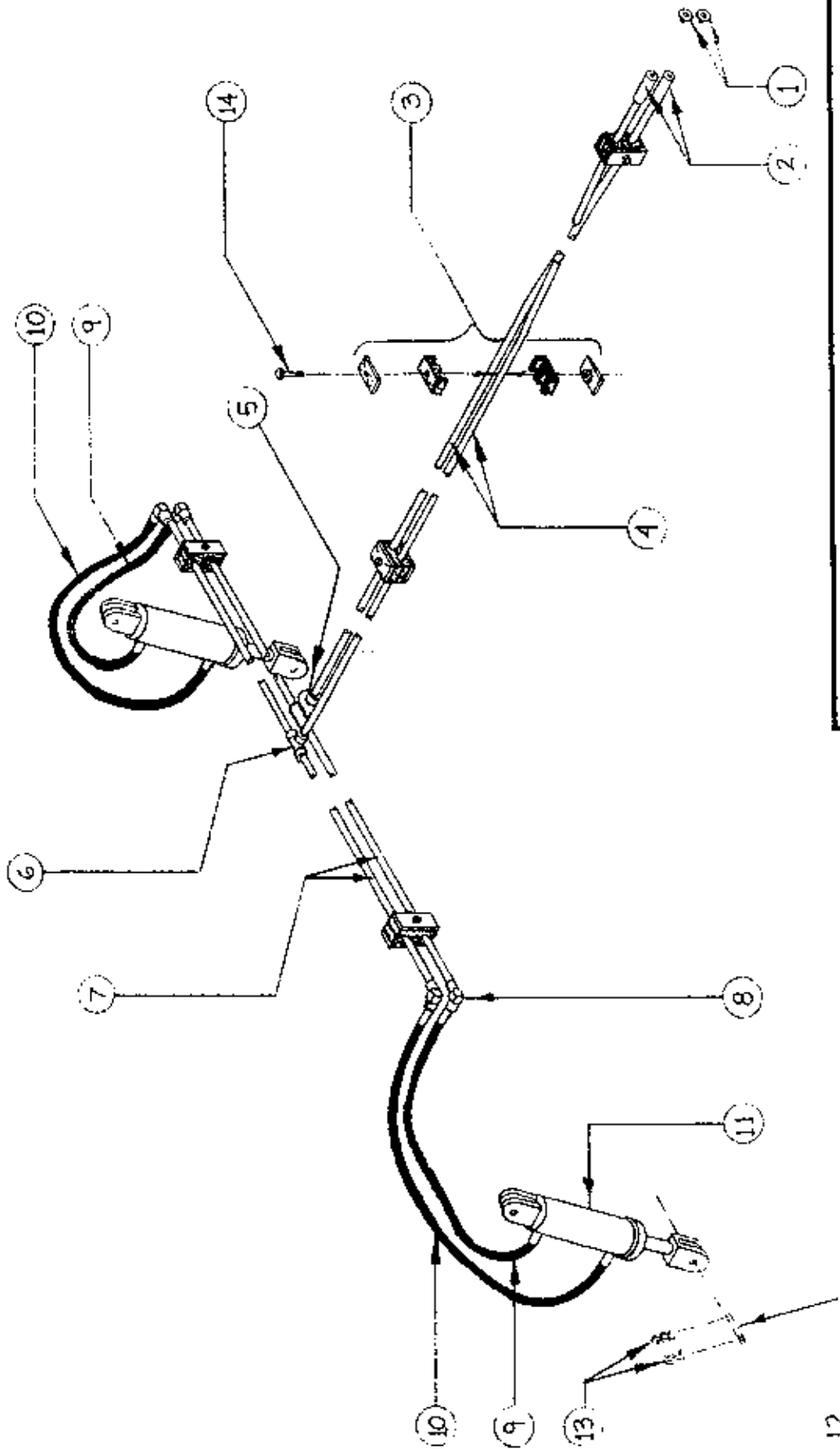
SCHMEISER LAND LEVELER

SCALE: N.T.S.	APPROVED BY:	DRAWN BY R. S. L. JR.
DATE: 3/24/92		REVISED
3160 E. CALIFORNIA AVE. FRESNO, CA 93714		
TIRE AXLE ASSEMBLY		DRAWING NUMBER SLP - 10

TABLE SLP-11

HYDRAULIC SYSTEM ASSEMBLY

Item #	Old Part #	New Part #	Description	Q-ty
1	SLP-A10BC-1	FC828CAP	1/2" PIPE PLUGS	2
2	SLP-A10BC-2	FFPFP0088C	1/2" COUPLINGS	2
3	SLP-A10BO-HC	HYCONCLP01	HOSE CLAMP	5
4	SLP-A10-3	SLP-00Q901	1/2" X 252" HYDRAULIC PIPE	2
5	SLP-A10BO-3	VFLOWDIV01	1/2" HYD. FLOW CONTROL VALVE	1
6	SLP-A10BO-4	FFPT080000	1/2" PIPE TEE	1
7	SLP-A10-4	SLP-00Q902	1/2" X 36" HYDRAULIC PIPE	4
8	SLP-A10BO-5	FFPFP9088C	1/2" X 90 ELBOW	4
9	SLP-A10BO-HL 33	} HK SLP	HYDRAULIC HOSE 1/2" X 33"	2
10	SLP-A10BO-HL 41		HYDRAULIC HOSE 1/2" X 41"	2
11	SLP-A10BO-HC 3 1/2 X 8	GHC-35080W	HYD. CYLINDER 3-1/2" X 8" WELDED	2
12	SLP-A10BO-6	GPN-1656HC	1" X 3-1/2" HYD. CYLINDER PINS	4
13	SLP-A10BO-7	GPN-02CLIP	HITCH PIN CLIP	8
14		CSNC505040	5/16" X 2-1/2" GR.5 Z/P BOLTS	5
15		LWASHER-05	5/16" LOCK WASHERS	5
16		HXNUT-05NC	5/16" HEX NUTS	5



SCHMEISER LAND LEVELER

SCALE: N.T.S. APPROVED BY: DRAWN BY: M. JACOBY
 DATE: 4/1/92 REVISED:

3160 E. CALIFORNIA AVE FRESNO, CA 93714

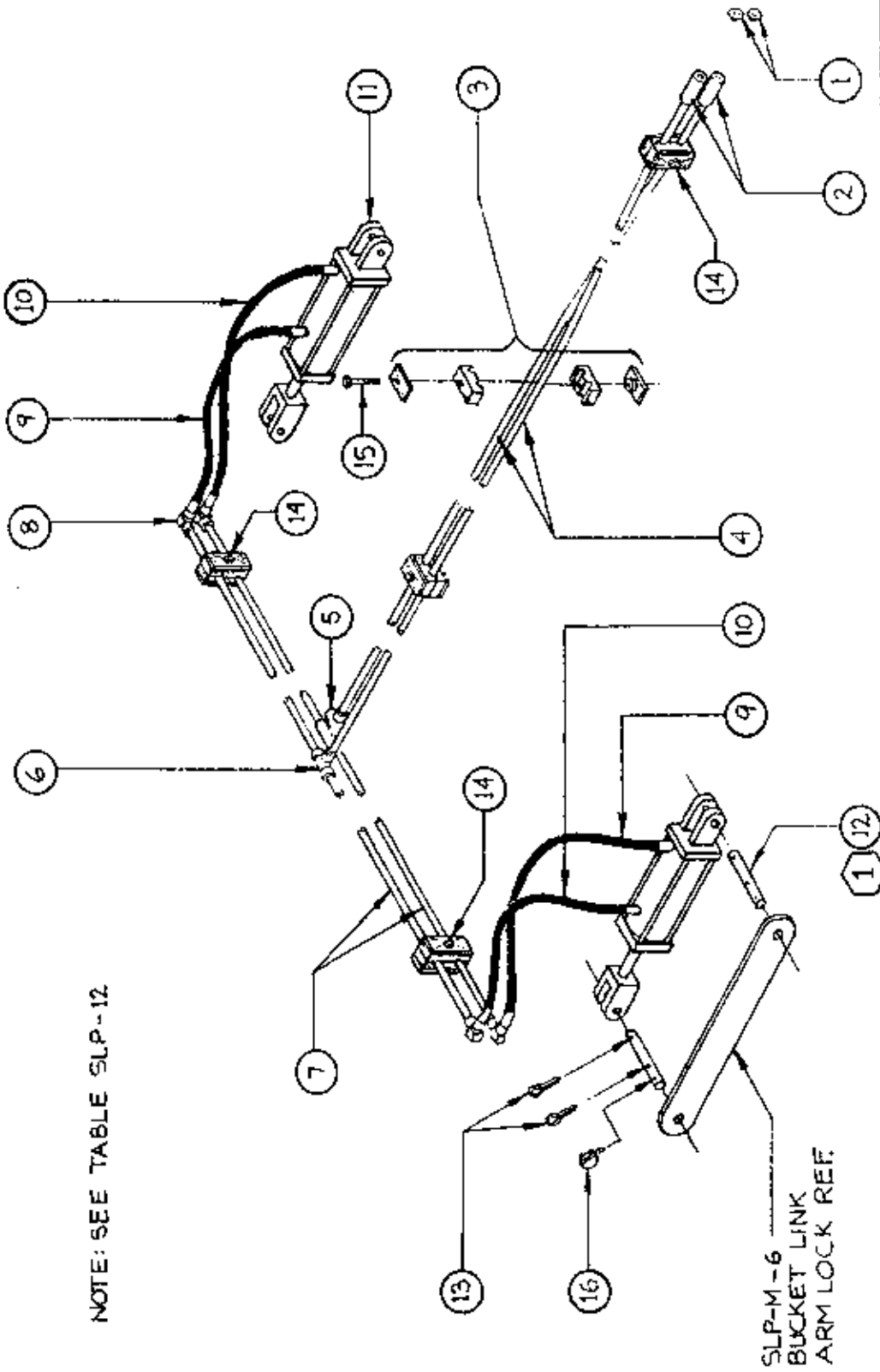
HYDRAULIC SYSTEM ASSEMBLY DRAWING NUMBER SLP-11

TABLE SLP-12

HYDRAULIC BUCKET LIFT SYSTEM ASSEMBLY

Item #	Old Part #	New Part #	Description	Q-ty
1	SLP-A1OBO-1	F0828CAP	1/2" PIPE PLUGS	2
2	SLP-A1OBO-2	FFPFP0088C	1/2" COUPLINGS	2
3	SLP-A1OBO-HC	HYCONCLP01	HOSE CLAMP	5
4	SLP-A1O-3	SLP-00Q901	1/2" X 252" HYDRAULIC PIPE	2
5	SLP-A10BO-3	VFLOWDIV01	1/2" HYD. FLOW CONTROL VALVE	1
6	SLP-A10BO-4	FFPT080000	1/2" PIPE TEE	1
7	SLP-A1O-4	SLP-00Q902	1/2" X 36" HYDRAULIC PIPE	4
8	SLP-A10BO-5	FFPFP9088C	1/2" X 90 ELBOW	4
9	SLP-A1OBO-HL 28	} HK HBO	HYDRAULIC HOSE 1/2" X 28"	2
10	SLP-A1OBO-HL 36		HYDRAULIC HOSE 1/2" X 36"	2
11	SLP-A1OBO-HC 3 X 8	GHC-30080T	HYD. CYLINDER 3" X 8" TIE ROD	2
12	SLP-M-7	SLP-00M700	LOCKOUT PINS	4
13		GPN-04X40C	1/4" X 2-1/2" COTTER PINS	8
14		CSNC505040	5/16" X 2-1/2" GR.5 Z/P BOLTS	3
15		CSNC505072	5/16" X 4-1/2" GR.5 Z/P BOLTS	2
16		HXNUT-05NC	5/16" HEX NUTS	5
17		LWASHER-05	5/16" LOCK WASHERS	5
18		GPN-040LYN	1/4" LYNCH PINS	4
		SLP HBO	HYDRAULIC BUCKET KIT (includes all above items)	

NOTE: SEE TABLE SLP-12



SLP-M-6
BUCKET LINK
ARM LOCK REF.

1 REPLACES 1" N.C. x 3" BOLT W/
NYLON LOCK NUT

SCHMEISER LAND LEVELER

SCALE: N.T.S.
DATE: 4/3/92
APPROVED BY:
DRAWN BY M. JACOBY
REVISED

3160 E. CALIFORNIA AVE. FRESNO, CA 93714

HYDRAULIC BUCKET LIFT SYSTEM ASSEMBLY
DRAWING NUMBER
SLP-12

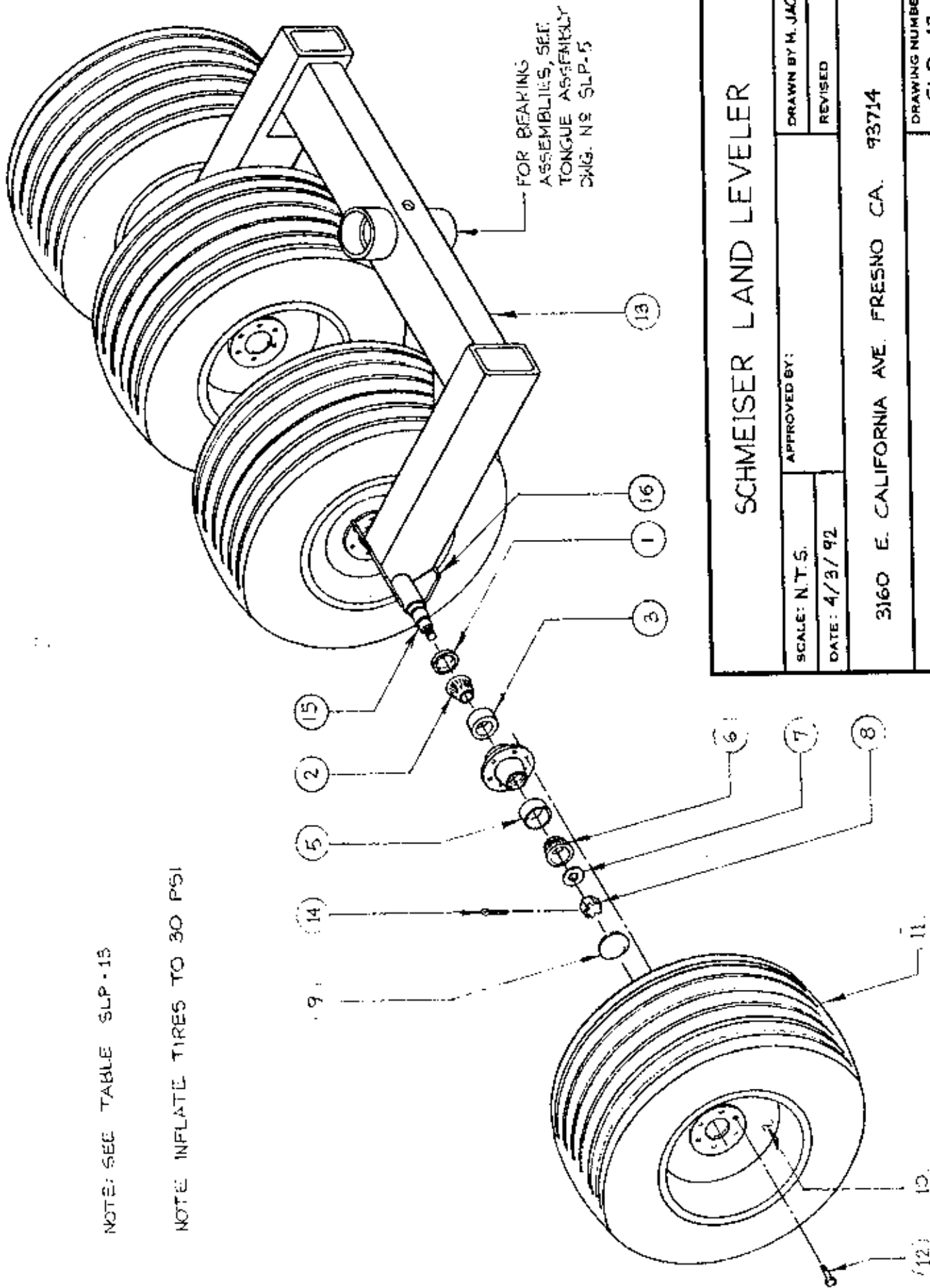
TABLE SLP-13

QUAD TIRE ASSEMBLY

Item #	Old Part #	New Part #	Description	Q-ty
1	SLP-P2BO-1	GHB-6X6GSL	OIL SEAL FOR 6 ON 6 STANDARD HUB	4
2	SLP-P2BO-2	GHB-6X61CN	INNER BEARING CONE FOR 6 ON 6 STD HUB	4
3	SLP-P2BO-3	GHB-6X6IRC	INNER BEARING RACE FOR 6 ON 6 STD HUB	4
4	SLP-P2BO-4	GHB-6X6STD	HUB, 6 ON 6 STANDARD COMPLETE - KIT (includes items 1, 2, 3, 4, 5, 6)	4
5	SLP-P2BO-5	GHB-6X6ORC	OUTER BEARING RACE FOR 6 ON 6 STD HUB	4
6	SLP-P2BO-6	GHB-6X6OCN	OUTER BEARING CONE FOR 6 ON 6 STD HUB	4
7	SLP-P2BO-7	FWASHER-14	7/8" FLAT WASHER	4
8	SLP-P2BO-8	CANUT-14NC	7/8" CASTLE NUT	4
9	SLP-P2BO-9	GHB-6X6CAP	DUST CAP FOR 6 ON 6 STD. HUB	4
10	SLP-P2BO-10	GWT-156LBH	15 X 6 WHEEL (6 OB 6)- OPTIONAL	4
11	SLP-P2BO-11	GWT-9515CB	9.5 X 15 8 PLY TIRE W/WHEEL	4
12	SLP-P2BO-12	WHB-08X016	WHEEL BOLTS FOR 6 ON 6 STD. HUB	24
13	SLP-P2	SLP-00P200	QUAD TIRE AXLE FRAME	1
14		GPN-04X28C	1/4" X 1-3/4" COTTER PIN	4
15	SLP-P2-06	GSP-32324D	2" X 20-1/4" DOUBLE ENDED SPINDLE	2
16	SLP-P2-03	GGU-08X25S	GENERAL SPINDLE GUSSET	4
		GSP-32324DK	2" X 20-1/4" DOUBLE ENDED SPINDLE KIT (includes items 7, 8, 14, 15, 16)	

NOTE: SEE TABLE SLP-15

NOTE: INFLATE TIRES TO 30 PSI



SCHMEISER LAND LEVELER

APPROVED BY:

SCALE: N.T.S.

DATE: 4/3/92

DRAWN BY M. JACOBY

REVISED

3160 E. CALIFORNIA AVE. FRESNO CA. 93714

QUAD TIRE ASSEMBLY - OPTIONAL -

DRAWING NUMBER

SLP-13

T.G. SCHMEISER CO., INC.

LIMITED WARRANTY

T. G. Schmeiser Co., Inc. warrants each new Schmeiser product to be free from defects in material and workmanship. This warranty is applicable only for the normal service life expectancy of the product or components, not to exceed twelve (12) consecutive months from the date of delivery of the new Schmeiser product to the original purchaser.

Genuine T. G. Schmeiser Co., Inc. replacement parts and components will be warranted for 365 days from date of purchase, or the remainder of the original equipment warranty period, whichever is longer.

Under no circumstances will it cover any merchandise or components thereof, which, in the opinion of the company, has been subjected to misuse, unauthorized modifications, alteration, an accident or if repairs have been made with parts other than those obtainable through T. G. Schmeiser Co., Inc.

The Company in no way warrants engines, batteries, cylinders, tires or other trade accessories since these items are warranted separately by their respective manufacturer. Expendable components such as points, shanks, blades, rings, bearings, teeth, and the like are excluded from this warranty.

Our obligation under this warranty shall be limited to repairing or replacing, free of charge to the original purchaser, any part that, in our judgment, shall show evidence of such defect, provided further that such part shall be returned within thirty (30) days from date of failure to T. G. Schmeiser Co., Inc., routed through the dealer and distributor from whom the purchase was made, transportation charges prepaid.

This warranty shall not be interpreted to render T. G. Schmeiser Co., Inc. liable for injury or damages of any kind or nature to person or property. This warranty does not extend to the loss of crops, loss because of delay in harvesting, or any expense or loss incurred for labor, substitute machinery, rental or for any other reason.

Except as set forth above, **T. G. Schmeiser Co., Inc. shall have no obligation or liability of any kind on account of any of its equipment and shall not be liable for special or consequential damages. T. G. Schmeiser Co., Inc. makes no other warranty, expressed or implied, and, specifically, T. G. Schmeiser Co., Inc. disclaims any implied warranty or merchantability or fitness for a particular purpose. Some states or provinces do not permit limitations or exclusions of implied warranties or incidental or consequential damages, so the limitations or exclusion in this warranty may not apply.**

This warranty is subject to any existing conditions of supply, which may directly affect our ability to obtain materials or manufacture replacement parts.

T. G. Schmeiser Co., Inc. reserves the right to make improvements in design or changes in specifications at any time, without incurring any obligation to owners of units previously sold.

No one is authorized to alter, modify or enlarge this warranty nor the exclusion, limitations and reservations.